

## TO LET

Unit 8, Carrigaline Shopping Centre,  
Carrigaline, Co. Cork.



**Superb Retail Premises**  
**96.6 sq m / 1,040 sq ft approx.**

### Property Highlights

- Excellent location in Carrigaline Shopping Centre which has traded successfully since 2000 and is a popular shopping destination
- Occupiers in the shopping centre include Collins SuperValu, Vodafone, Carrigaline Post Office, Chocolate Hair Group, Martin Walsh Pharmacy, Homefront, Moore's Jewellers, Hallmark and Fig & Olive Restaurant
- Carrigaline is a vibrant town and popular shopping location serving the town and a wide surrounding catchment.

### Contact

Séamus Costello  
Email: [seamus.costello@cushwake.ie](mailto:seamus.costello@cushwake.ie)  
Tel: +353 (0)21 427 5454

Philip Horgan  
Email: [philip.horgan@cushwake.ie](mailto:philip.horgan@cushwake.ie)  
Tel: +353 (0)21 427 5454

Cushman & Wakefield  
No. 6 Lapp's Quay  
Cork  
Ireland  
Tel: +353 (0)21 427 5454

## The Location

Carrigaline Shopping Centre is located centrally on Carrigaline's Main Street, which has a host of retail, food outlets, banks and service providers.

Carrigaline has a population of 16,000 people approx and is close to a number of major employment hubs and Cork city.

## Description

The property comprises a compact shop premises contained within Carrigaline Shopping Centre which is a covered shopping mall. Ample on site customer car parking services the shopping centre.

## Accommodation

The unit extends to 96.6 sq m (1.040 sq ft)

## BER details

BER B3

Ber No. 800410730

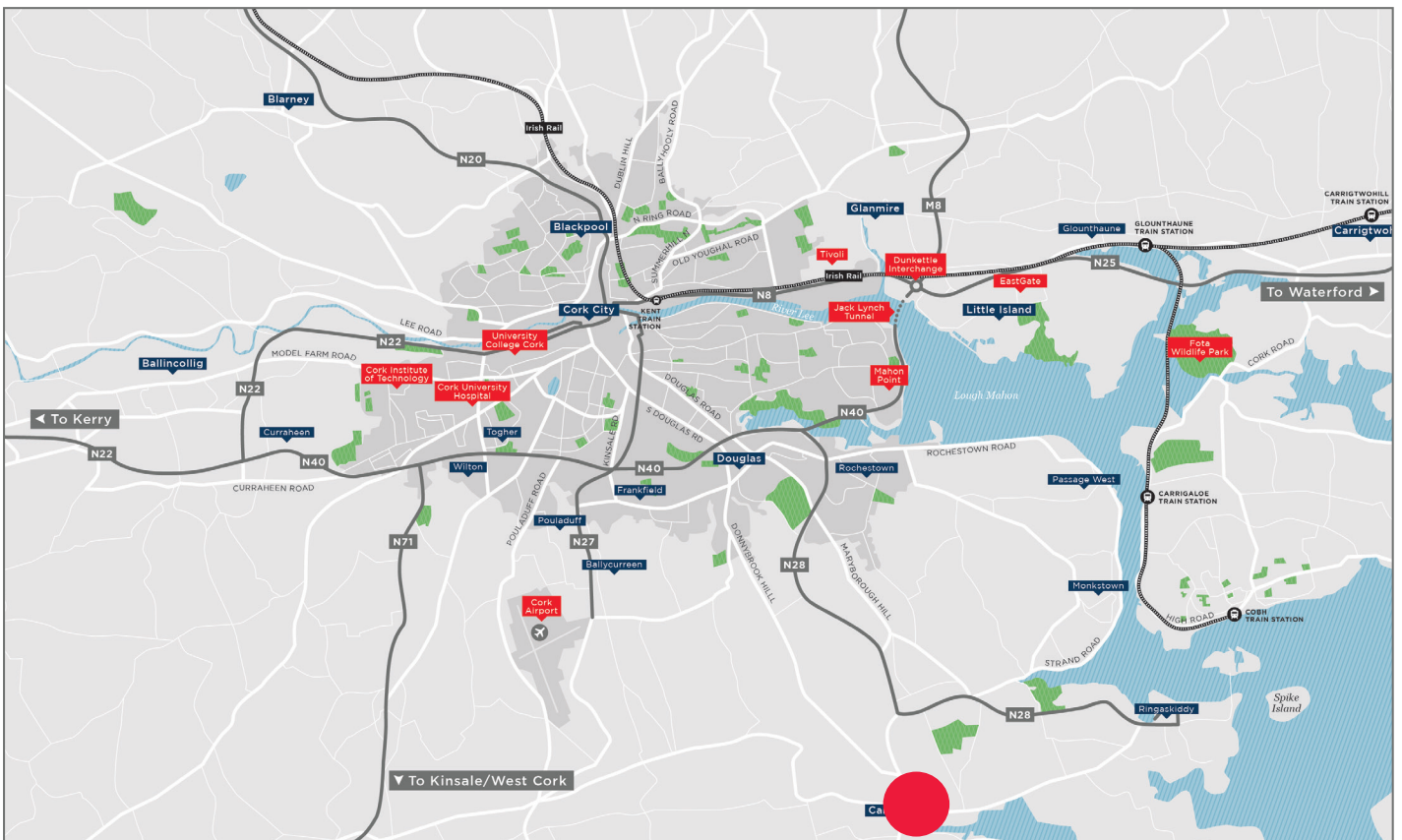
Energy Performance Indicator: 713.38 kWh/m<sup>2</sup>/yr.

## Rent

On application.

## Viewings

Strictly by appointment with the sole agents Cushman & Wakefield.



Cushman & Wakefield  
No. 6 Lapp's Quay  
Cork  
Ireland  
Tel: +353 (0)21 427 5454  
Email: [cork@cushwake.ie](mailto:cork@cushwake.ie)

[cushmanwakefield.ie](https://www.cushmanwakefield.ie)

A full copy of our general brochure conditions can be viewed on our website at <https://property.cushwake.ie/disclaimer>, or can be requested from your local Cushman & Wakefield office. We strongly recommend that you familiarise yourself with these general conditions. While care has been taken to ensure that information contained in Cushman & Wakefield publications is correct at the time of publication, changes in circumstances after the time of publication may impact on the accuracy of this information. PSRA Registration Number: 002607.